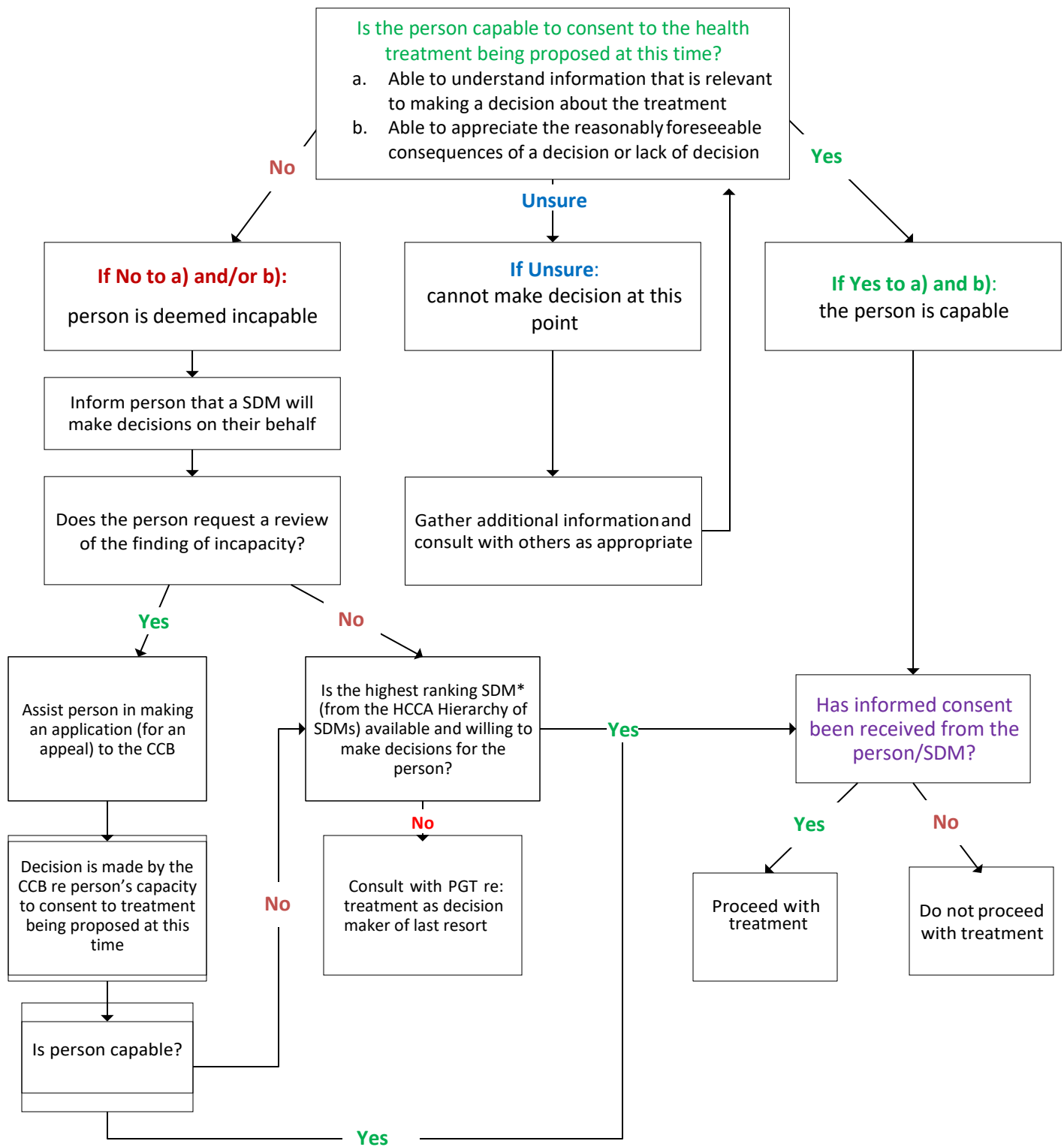


# Capacity Decision Tree to determine who provides Informed Consent

## Health Care Consent Act, 1996



SDM – Substitute decision-maker  
CCB – Consent and Capacity Board  
PGT – Public Guardian and Trustee  
HCCA – Health Care Consent Act

*\*If there are multiple SDMs of equal ranking, then the health practitioner may suggest to the group to collectively make a decision or appoint one individual to be the lead in communicating with the health practitioner (as it applies within the practice setting).*

*This decision tree does not contemplate all scenarios, but is intended to be a general guide to consent issues.*